

**Attend a Lottery Information Session**

Spanish | 10:15–11:00

English | 11:15–12:00

Spanish | 12:15–1:00

English | 1:15–2:00

**School  
Choice  
Magnet**



**FAIR**

Sponsored by



Black Googler Network



Diversity  
Equity  
Inclusion



# Director's Message

## Welcome Families,

The 2023–2024 school year marks a significant milestone for Charlotte-Mecklenburg School Choice Magnet Programs – **31 years of excellence.** It all started back in 1992 when the program was created to align with students' interests and learning styles by offering school themes. One of the first programs was the International Bacculaureate program. The program was intentionally implemented to develop international mindedness and to prepare students to be globally competitive.

Today, CMS School Choice Magnet Programs have been recognized for our innovative and award-winning offerings. Within our **71 schools** and the growing number of programs, we offer a variety of themes and learning approaches starting from pre-kindergarten through high school. Students can be fully immersed in world languages, code, and program algorithms in our computer science immersion experiences, and earn various certifications in our career and technical education pathways.

In the past 17 years, our programs have won **234 Merit Awards** and **12 nationally certified sites.** Magnet Schools of America is an organization focused on the core values of Diversity, Innovation, Excellence, Instruction, and Partnership. Our mission is to continue striving for excellence, equity, and access by connecting students' interests and needs with high-quality themes and educational approaches.

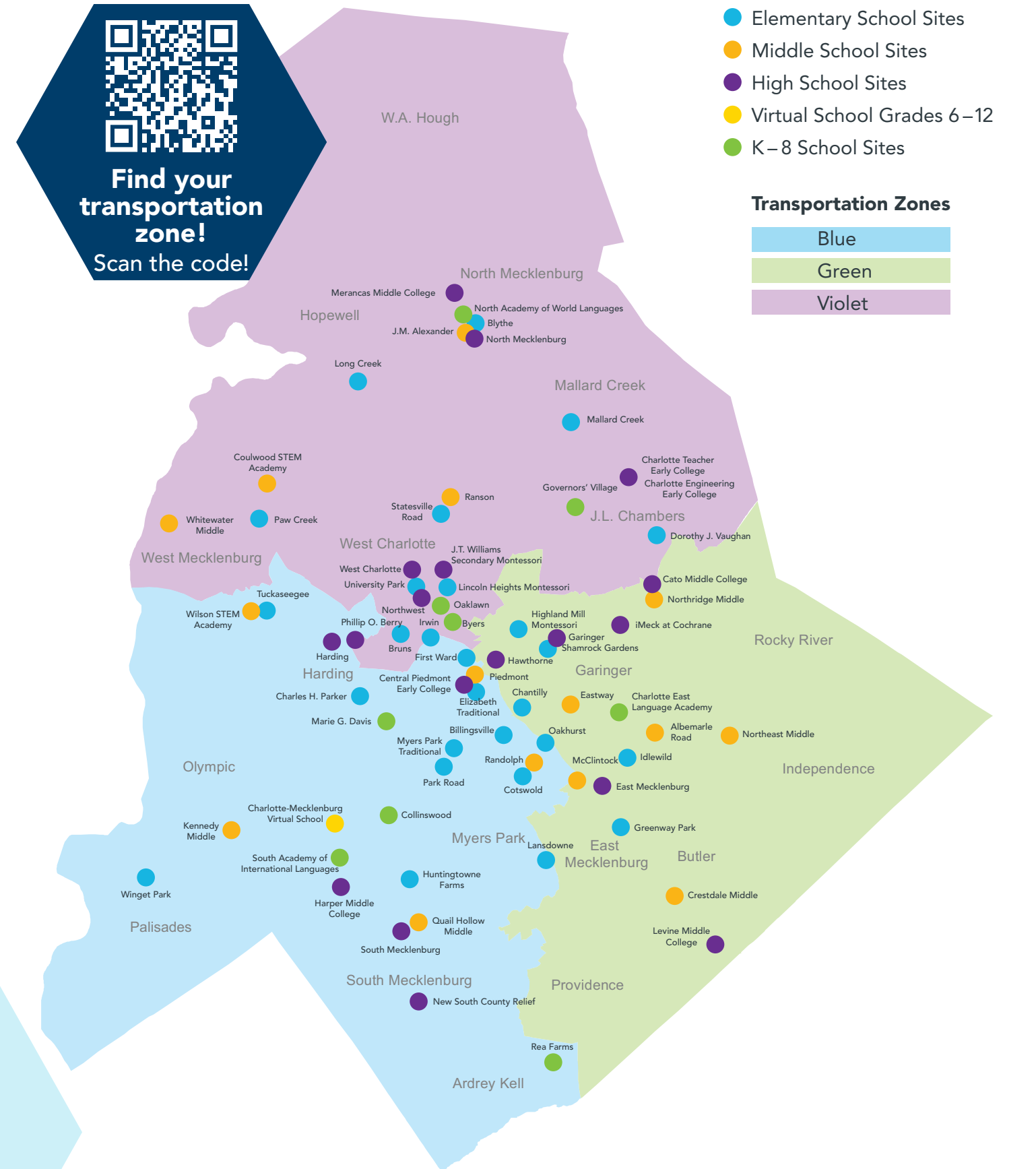
As you walk through and experience the fair, please take some time to leave us feedback about the experience. Use your phone to scan the QR code on the back cover! Take some time to connect and visit with our schools to examine what theme-based learning experience connects to your child's interests. Also, you can scan the QR code on the next page to find your transportation zone to help you navigate to the program of your choice. If you need help during the fair, there are plenty of volunteers to help you! **Have fun and thank you for attending!**

Thanks,

Walter J. Hall  
Director of Magnet Programs



# Charlotte-Mecklenburg Schools 2024 – 2025 School Choice Locations



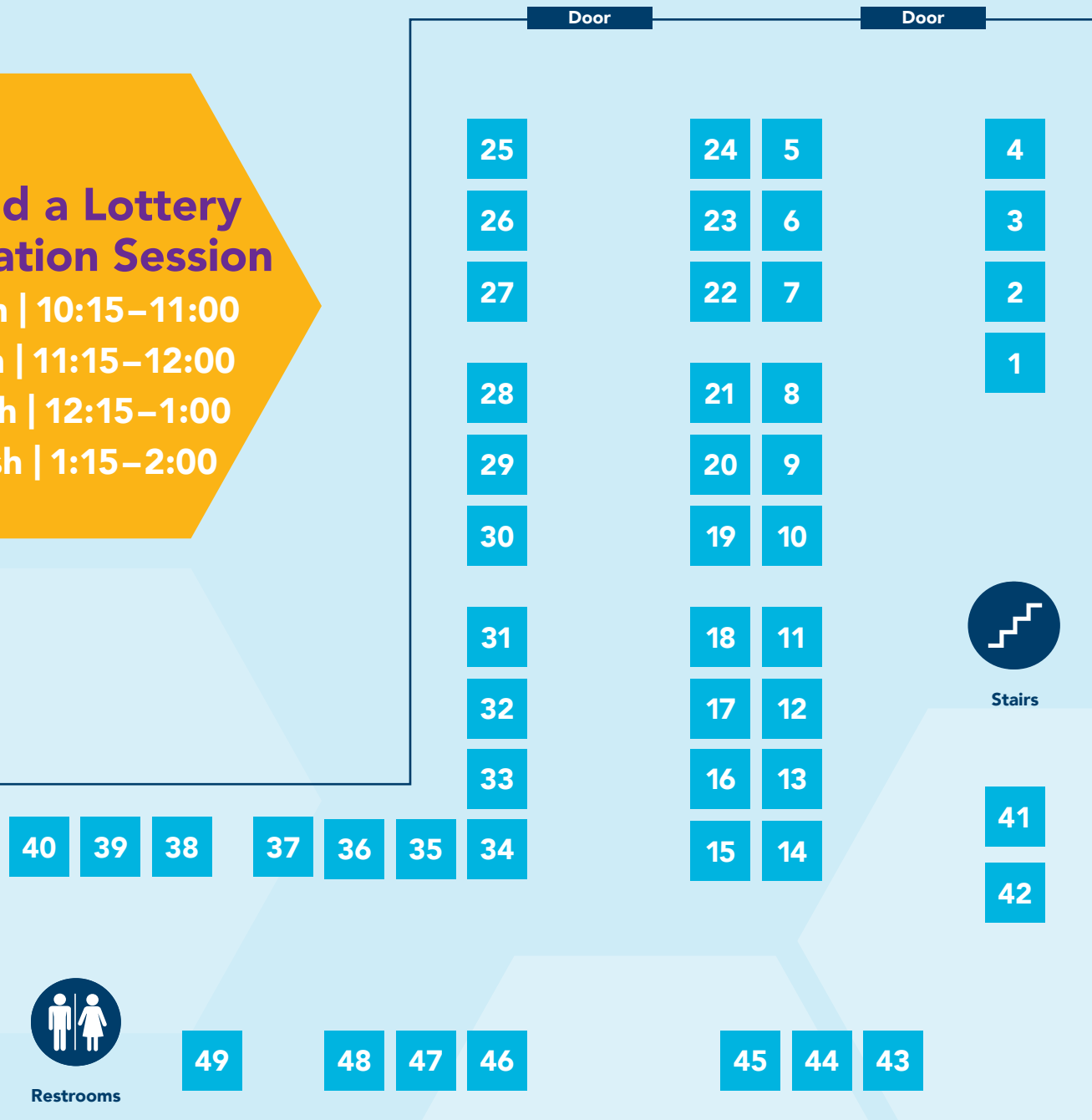
Note: J.T. Williams Secondary Montessori and Northwest School of the Arts have grades spanning middle school and high school. They are shown as high schools.

# Magnet Schools

Located in Cafeteria

## Attend a Lottery Information Session

Spanish | 10:15–11:00  
 English | 11:15–12:00  
 Spanish | 12:15–1:00  
 English | 1:15–2:00



### Leadership

- 1 Elizabeth Traditional Elementary School
- 2 Myers Park Traditional Elementary School

### Cambridge

- 3 Eastway Middle School
- 4 Garinger High School

### Exercise Science

- 4 Garinger High School

### World Languages

- 4 Garinger High School
- 5 Charlotte East Language Academy
- 6 Collinswood Language Academy
- 7 Oaklawn Language Academy
- 8 North Academy of World Languages
- 9 South Academy of International Languages
- 10 South Mecklenburg High School
- 11 North Mecklenburg High School\*

### International Baccalaureate

- 11 North Mecklenburg High School\*
- 12 East Mecklenburg High School
- 13 South County Relief High School
- 14 West Charlotte High School
- 15 Marie G. Davis K–8 School
- 16 Albemarle Road Middle School
- 17 J.M. Alexander Middle School
- 18 Piedmont Middle School
- 19 Randolph Middle School
- 20 Ranson Middle School
- 21 Quail Hollow Middle School
- 22 Billingsville/Cotswold Elementary School
- 23 Blythe Elementary School
- 24 Huntingtowne Farms Elementary School
- 25 Lansdowne Elementary School
- 26 Statesville Road Elementary School

### Law, Social Justice & Forensic Pathology

- 27 Harding University High School

### Early/Middle Colleges

- 28 Charlotte Engineering & Teacher Early College
- 29 Central Piedmont Early College
- 30 CMS Middle College High Schools

### STEM/STEAM

- 31 Bruns Avenue Elementary School
- 32 Oakhurst Elementary School
- 33 Winget Park Elementary School
- 34 Coulwood Middle School
- 35 Kennedy Middle School
- 36 McClintock Middle School
- 37 Whitewater Middle School
- 38 Governors' Village STEM Academy
- 39 Rea Farms STEAM Academy
- 40 Walter G. Byers School
- Phillip O. Berry Academy of Technology\*
- Hawthorne Academy of Health Sciences\*

### Computer Science

- 41 Dorothy J. Vaughan Academy of Technology
- 42 Paw Creek Elementary School
- Northeast Middle School\*
- Northridge Middle School\*
- Wilson STEM Academy\*
- Harding University High School\*

### Visual and Performing Arts

- 43 Greenway Park Creative Arts & Sciences
- 44 First Ward Creative Arts Academy
- 45 Long Creek Elementary School
- 46 University Park Creative Arts
- 47 Crestdale Middle School
- 48 Northwest School of the Arts

### Virtual Learning

- 49 Charlotte Mecklenburg Virtual School

### Digital Marketing, Multimedia, and Design (DM<sup>2</sup>D)

- iMeck at Cochrane Collegiate Academy\*

### Military, Global Leadership, & Public Safety

- Hawthorne Academy\*

\*This school offers Career Technical Education courses. This school can be found in the CTE Experience, located in the Auxiliary Gym.

## Need an interpreter?

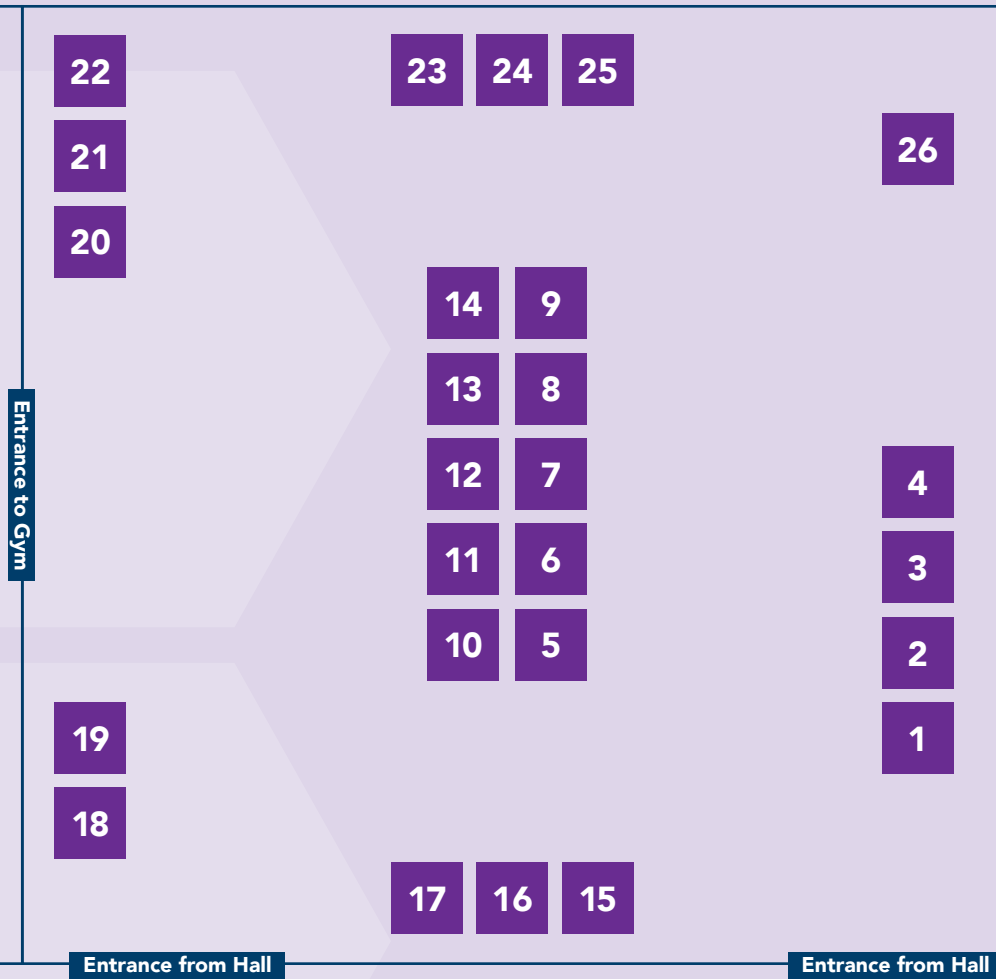
Interpreters are located in the office near the main entrance.

**CTE EXPERIENCE**  
 CAREER TECHNICAL EDUCATION  
 Located in the Auxiliary Gym



# CTE Experience

Located in Auxiliary Gym



## Career Technical Education

Charlotte-Mecklenburg Schools wants to ensure that every student is ready for the next step after high school, whether that step is college, career, or military service. Career & Technical Education helps prepare students who want to embark on a career trajectory while still in high school. Students can choose from over 20 pathways, each with three to four sequenced courses. Some pathways can result in industry certifications while still in high school. Others provide early credit toward a post-secondary degree. All of them offer the opportunity to connect with future employers through job shadowing and internships.



For more information on how CTE works, scan the QR code or visit our website at [discovercte.com](http://discovercte.com)

**Magnet Schools**  
Located in the Cafeteria



### Phillip O. Berry Academy of Technology

- 1 Automotive & Advanced Manufacturing & Engineering
- 2 Carpentry & Graphic and Digital Design
- 3 Biomedical Science & Game Art Design
- 4 Sport and Event Marketing & Software Development

### Industry Partners

- 5 Samet
- 6 AIM
- 8 Sonic Automotives
- 9 Culinary Arts
- 10 James Rivers
- 11 McGee Brothers
- 13 Cosmetology
- 14 Novant

### CTE Information

- 7 Information
- 12 Information

### Middle School CTE Discoveries

- 15 Northeast Middle School
- 16 Northridge Middle School
- 17 Wilson Middle School

### iMeck at Cochrane Collegiate Academy

- 18 Graphic and Digital Design & Digital Marketing
- 19 Sport and Event Marketing & Business Management



### Hawthorne Academy of Health Sciences & Military, Global Leadership & Public Safety

- 20 Biomedical Science & Public Safety
- 21 Law & Justice
- 22 Emergency Management Systems & EMT/ Medical Technology

### North Mecklenburg High School

- 23 Automotive
- 24 Cosmetology
- 25 Culinary Arts

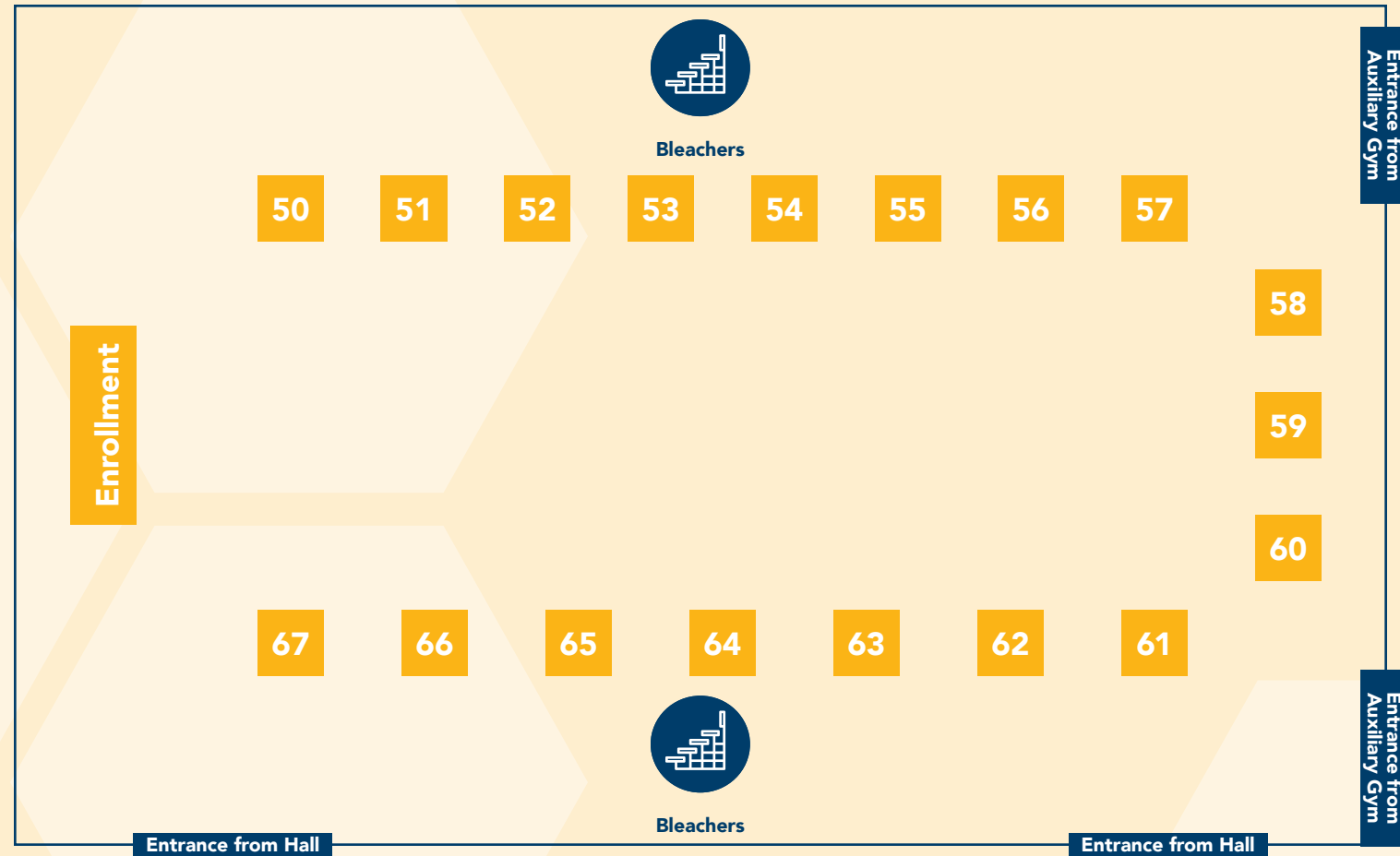
### Harding University High School

- 26 Computer Science & Software Development

**Magnet Schools, Departments & Enrollment Help**  
Located in the Gym

# Magnet Schools, Departments, & Enrollment Help

Located in Gym



## Montessori

- 50 Chantilly Montessori
- 51 Highland Mill Montessori
- 52 Lincoln Heights Montessori
- 53 Park Road Montessori
- 54 J. T. Williams Secondary Montessori

## Learning Immersion/Talent Development

- 55 Charles H. Parker Academic Center
- 56 Idlewild Elementary School
- 57 Irwin Academic Center
- 58 Mallard Creek Elementary School
- 59 Shamrock Gardens Elementary School
- 60 Tuckaseegee Elementary School

## Departments

- 61 Advanced Studies
- 62 After School Enrichment Program (ASEP)
- 63 Exceptional Children (EC)
- 64 International Center
- 65 Pre-Kindergarten
- 66 Title I Family Engagement & Community Outreach
- 67 Transportation

## Enrollment

Student Placement & International Admissions

# Elementary School Magnet Options

	Blue Transportation Zone	Green Transportation Zone	Violet Transportation Zone
<b>International Baccalaureate</b>	• Billingsville K-2 • Cotswold 3-5 • Huntingtowne Farms • Marie G. Davis	• Lansdowne • Marie G. Davis	• Blythe • Marie G. Davis • Statesville Road
<b>Leadership</b>	• Myers Park	• Elizabeth	• Elizabeth (1) • Myers Park (1)
<b>Learning Immersion/ Talent Development</b>	• Charles H. Parker • Tuckaseegee (2)	• Charles H. Parker • Idlewild • Shamrock Gardens	• Irwin • Mallard Creek • Tuckaseegee (2)
<b>Montessori</b>	• Park Road (3)	• Chantilly (3)	• Highland Mill (3) • Lincoln Heights (3)
<b>Science, Technology, Engineering, (Arts) and Math (STEM/STEAM) (General)</b>	• Rea Farms STEAM • Walter G. Byers • Winget Park	• Oakhurst STEAM • Walter G. Byers	• Governors Village • Walter G. Byers
<b>Science, Technology, Engineering and Math (STEM) (Computer Science)</b>	• Paw Creek (4)	• Dorothy J. Vaughan (5)	• Dorothy J. Vaughan (5) • Paw Creek (4)
<b>Science, Technology, Engineering and Math (E-STEM) (Environmental Sustainability)</b>	N/A	N/A	• Bruns
<b>Visual and Performing Arts</b>	• First Ward • Long Creek (6)	• First Ward • Greenway Park (Creative Arts & Science)	• Long Creek (6) • University Park
<b>World Languages (Spanish)</b>	• Collinswood (7)	• Charlotte East (7)	• Oaklawn (7)
<b>World Languages (Chinese, French, German)</b>	• South Academy of International Languages (7)	• South Academy of International Languages (7)	• North Academy of World Languages (7)
<b>World Languages (Japanese)</b>	• South Academy of International Languages (7)	• South Academy of International Languages (7)	• South Academy of International Languages (7)

(1) Students from the home high school boundaries of Ardrey Kell, Harding, Hopewell, Myers Park\*, Olympic, Palisades, South Mecklenburg, West Charlotte, South County Relief and West Mecklenburg will receive transportation to Myers Park Traditional.

Park\*, North Mecklenburg, Providence, and Chambers will receive transportation to Elizabeth Traditional.

\*Myers Park High attendance area and Center City magnet feeder residents may apply to either Elizabeth Traditional or Myers Park Traditional.

Students from the home high school boundaries of Butler, Hough, East Mecklenburg, Garinger, Independence, Mallard Creek, Rocky River, Myers

(2) Tuckaseegee serves the West Mecklenburg High School feeder pattern portion of the Blue Zone.

(3) Students must complete the Late Entry process to enter a Montessori program for the first time after first grade.

(4) Paw Creek serves the Violet Zone and the West Mecklenburg High feeder pattern portion of the Blue Zone.

(5) Dorothy J. Vaughan serves the Violet Zone and the Green portions of the

Garinger and Rocky River High feeder patterns.

(6) Long Creek Elementary serves the Violet Zone and the Blue portion of the West Mecklenburg High feeder pattern.

(7) Language Immersion schools require a Late Entry Assessment after kindergarten.

## CTE Experience

Located in the Auxiliary Gym

# Middle School Magnet Options

	Blue Transportation Zone	Green Transportation Zone	Violet Transportation Zone
<b>Cambridge</b> (new 2024 – 25)	N/A	• <b>Eastway</b>	N/A
<b>International Baccalaureate</b>	• <b>Marie G. Davis</b> • <b>Quail Hollow</b> • <b>Randolph</b>	• <b>Albemarle Road</b> • <b>Marie G. Davis</b> • <b>Randolph</b>	• <b>Alexander</b> • <b>Marie G. Davis</b> • <b>Piedmont</b> • <b>Ranson</b>
<b>Learning Immersion/ Talent Development</b>	<i>See International Baccalaureate (1)</i>	<i>See International Baccalaureate (1)</i>	<i>See International Baccalaureate (1)</i>
<b>Montessori</b>	• <b>J.T. Williams (2)</b>	• <b>J.T. Williams (2)</b>	• <b>J.T. Williams (2)</b>
<b>Science, Technology, Engineering, (Arts) and Math (STEM/STEAM) (General)</b>	• <b>Coulwood (3)</b> • <b>Kennedy</b> • <b>Rea Farms STEAM</b> • <b>Walter G. Byers</b>	• <b>McClintock STEAM</b> • <b>Walter G. Byers</b>	• <b>Coulwood (3)</b> • <b>Governors Village (4)</b> • <b>Walter G. Byers</b>
<b>Science, Technology, Engineering and Math (STEM) (Computer Science)</b>	• <b>Wilson (5)</b>	• <b>Northeast (6)</b> • <b>Northridge (7)</b>	• <b>Northridge (7)</b> • <b>Wilson (5)</b>
<b>Science, Technology, Engineering and Math (E-STEM) (Environmental Sustainability)</b>	• <b>Whitewater (8)</b>	N/A	• <b>Whitewater (8)</b>
<b>Virtual Learning</b>	• <b>Charlotte-Mecklenburg Virtual School</b>	• <b>Charlotte-Mecklenburg Virtual School</b>	• <b>Charlotte-Mecklenburg Virtual School</b>
<b>Visual and Performing Arts</b>	• <b>Northwest</b>	• <b>Crestdale</b> • <b>Northwest</b>	• <b>Northwest</b>
<b>World Languages (Spanish)</b>	• <b>Collinswood (9)</b>	• <b>Charlotte East (9)</b> (grades 6 & 7 only)	• <b>Oaklawn (9)</b>
<b>World Languages (Chinese, French, German)</b>	• <b>South Academy of International Languages (9)</b>	• <b>South Academy of International Languages (9)</b>	• <b>North Academy of World Languages (9)</b>
<b>World Languages (Japanese)</b>	• <b>South Academy of International Languages (9)</b>	• <b>South Academy of International Languages (9)</b>	• <b>South Academy of International Languages (9)</b>

(1) LI/TD magnet students have continuation guarantee into middle school IB.

(2) Secondary Montessori begins at 7th grade and continues through 12th grade. Students must complete the Late Entry process to enter a Montessori program for the first time after first grade.

(3) Coulwood serves the Violet Zone students living in the Hopewell, West Charlotte and the Blue portion of the West Mecklenburg High feeder pattern.

(4) Governors Village serves all Violet Zone students in grades K-5. In grades 6-8, transportation is provided to students living in the Hough, Mallard Creek, North Mecklenburg, and Chambers High.

(5) Wilson Middle serves the Blue Zone and the Violet portion of the West Mecklenburg High feeder pattern.

(6) Northeast Middle serves the Butler, East Mecklenburg, Independence, and Providence High feeder patterns.

(7) Northridge Middle serves the Violet Zone and the Green portions of Garinger and Rocky River High feeder patterns.

(8) Whitewater Middle serves the Violet Zone and the Blue portion of the West Mecklenburg High feeder pattern.

(9) Language Immersion schools require a Late Entry Assessment after kindergarten.

# High School Magnet Options

	Blue Transportation Zone	Green Transportation Zone	Violet Transportation Zone
<b>Automotive Technology</b>	N/A	N/A	• <b>North Mecklenburg</b>
<b>Cambridge</b> (new 2024 – 25)	N/A	• <b>Garinger</b>	N/A
<b>Cosmetology</b>	N/A	N/A	• <b>North Mecklenburg</b>
<b>Culinary Arts</b>	N/A	N/A	• <b>North Mecklenburg</b>
<b>Digital Marketing, Multimedia, and Design (DM²D)</b>	N/A	• <b>iMeck Academy at Cochrane (1)</b>	• <b>iMeck Academy at Cochrane (1)</b>
<b>Early College</b> <i>Classes begin early August; this is earlier than other traditional and magnet schools</i>	• <b>Central Piedmont Early College</b> • <b>Charlotte Engineering Early College</b> • <b>Charlotte Teachers Early College</b>	• <b>Central Piedmont Early College</b> • <b>Charlotte Engineering Early College</b> • <b>Charlotte Teachers Early College</b>	• <b>Central Piedmont Early College</b> • <b>Charlotte Engineering Early College</b> • <b>Charlotte Teachers Early College</b>
<b>Exercise Science</b> (new 2024 – 25)	N/A	• <b>Garinger</b>	N/A
<b>International Baccalaureate</b>	• <b>South County Relief High School</b>	• <b>East Mecklenburg</b>	• <b>North Mecklenburg</b> • <b>West Charlotte</b>
<b>Law, Social Justice and Forensic Pathology</b>	• <b>Harding University</b>	• <b>Harding University</b>	• <b>Harding University</b>
<b>Learning Immersion/ Talent Development</b>	<i>See International Baccalaureate</i>	<i>See International Baccalaureate</i>	<i>See International Baccalaureate</i>
<b>Middle College</b> <i>Classes begin early August; this is earlier than other traditional and magnet schools</i>	• <b>Cato Middle College</b> • <b>Harper Middle College</b> • <b>Levine Middle College</b> • <b>Merancas Middle College</b>	• <b>Cato Middle College</b> • <b>Harper Middle College</b> • <b>Levine Middle College</b> • <b>Merancas Middle College</b>	• <b>Cato Middle College</b> • <b>Harper Middle College</b> • <b>Levine Middle College</b> • <b>Merancas Middle College</b>
<b>Montessori</b>	• <b>J.T. Williams (2)</b>	• <b>J.T. Williams (2)</b>	• <b>J.T. Williams (2)</b>
<b>Military, Global Leadership &amp; Public Safety</b>	• <b>Hawthorne</b>	• <b>Hawthorne</b>	• <b>Hawthorne</b>
<b>STEM (Computer Science)</b>	• <b>Harding University High School</b>	• <b>Harding University High School</b>	• <b>Harding University High School</b>
<b>STEM (3D &amp; Digital Manufacturing, Biomedical, Construction, Game Art Design, Graphic &amp; Digital Design, Software Development, and Sports &amp; Event Marketing)</b>	• <b>Phillip O. Berry</b>	• <b>Phillip O. Berry</b>	• <b>Phillip O. Berry</b>
<b>STEM (Health Sciences)</b>	• <b>Hawthorne</b>	• <b>Hawthorne</b>	• <b>Hawthorne</b>
<b>Virtual Learning</b>	• <b>Charlotte-Mecklenburg Virtual School</b>	• <b>Charlotte-Mecklenburg Virtual School</b>	• <b>Charlotte-Mecklenburg Virtual School</b>
<b>Visual and Performing Arts</b>	• <b>Northwest</b>	• <b>Northwest</b>	• <b>Northwest</b>
<b>World Languages (Spanish)</b>	• <b>South Mecklenburg</b>	• <b>Garinger</b> (grade 9 only) • <b>South Mecklenburg</b> (grades 10 – 12)	• <b>North Mecklenburg</b>
<b>World Languages (Chinese, French, German, Japanese)</b>	• <b>South Mecklenburg</b>	• <b>South Mecklenburg</b>	• <b>North Mecklenburg</b>

(1) iMeck serves the Green Zone and the Chambers part of the Violet Zone.

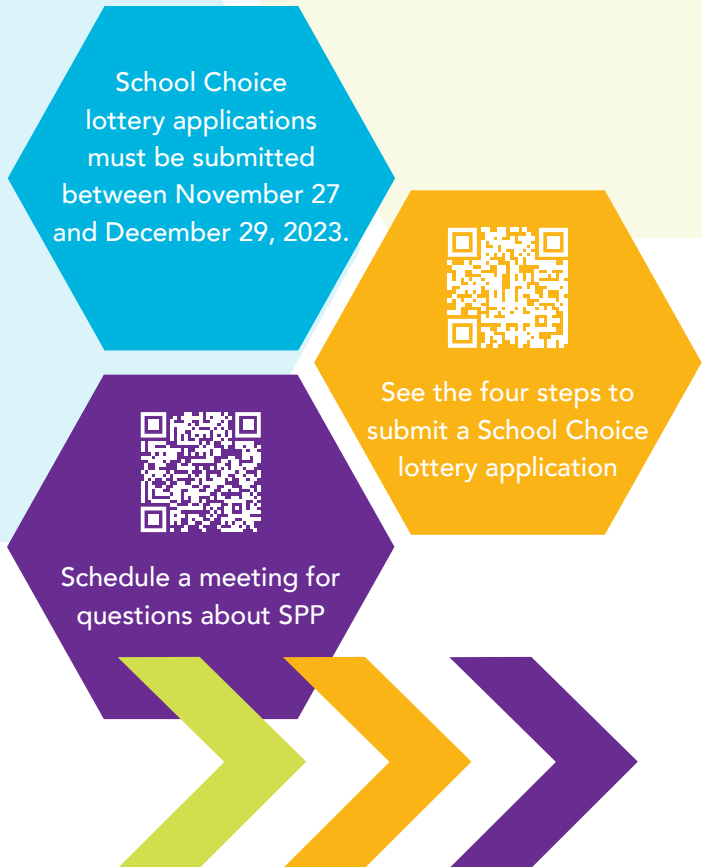
(2) Secondary Montessori begins at 7th grade and continues through 12th grade. Students must complete the Late Entry process to enter a Montessori program for the first time after first grade.

# Key Lottery Dates



# 2024 – 2025 School Performance Priority Schools

- CMS's School Performance Priority (SPP) provides students in qualifying schools the opportunity to apply in the CMS School Choice lottery to a higher performing neighborhood home school or magnet school with priority status.
- If your child's 2024 – 2025 school has been selected for SPP, you can use the list to see which schools you can select and receive a priority for during the School Choice lottery.
- During the lottery, you can select up to six choices.



2024 – 2025 School Assigned	2024 – 2025 Priority Option Schools
Ashley Park Pre-K – 8	Dilworth (Sedgefield campus) Irwin Elementary Alexander Graham Middle Piedmont Middle
J.M. Alexander Middle	Northridge Middle
Bruns Avenue Elementary	Dilworth (Sedgefield campus) Irwin Elementary
Julius L. Chambers High	Mallard Creek High North Mecklenburg High
Cochrane Collegiate Academy	Alexander Graham Middle Crestdale Middle Mint Hill Middle
David Cox Road Elementary	Mallard Creek Elementary
Devonshire Elementary	First Ward Elementary Oakhurst Elementary Shamrock Gardens Elementary
Druid Hills Academy	Dilworth (Sedgefield campus) Irwin Elementary Piedmont Middle
Eastway Middle	Crestdale Middle Mint Hill Middle Alexander Graham Middle Piedmont Middle
Hornets Nest Elementary	Long Creek Elementary Winding Springs Elementary
James Martin Middle	Northridge Middle
Montclair Elementary	Selwyn Elementary
Newell Elementary	Mallard Creek Elementary
Oakdale Elementary	Dilworth (Sedgefield campus) Irwin Elementary
Ranson Middle	Bradley Middle Piedmont Middle Alexander Graham Middle
Reid Park Academy	Charles H. Parker Elementary Dilworth (Sedgefield campus)
Starmount Academy of Excellence	Dilworth (Sedgefield campus) Huntingtowne Farms Elementary McAlpine Elementary Pineville Elementary
Statesville Road Elementary	Dilworth (Sedgefield campus) Irwin Elementary
Sterling Elementary	Dilworth (Sedgefield campus) Huntingtowne Farms Elementary McAlpine Elementary Pineville Elementary
West Mecklenburg High School	Myers Park High School North Mecklenburg High School
Winterfield Elementary	First Ward Elementary Oakhurst Elementary Shamrock Gardens Elementary

# Notes



**How did we do?**  
Scan the code to  
take our survey!



School  
Choice  
Magnet



**FAIR**



**How did we do?**  
Scan the code to  
take our survey!



## Contact Us



**Email:** [schoolchoice@cms.k12.nc.us](mailto:schoolchoice@cms.k12.nc.us)

**Call:** 980-343-5030

**Meet:** [calendly.com/cmsschoolchoice](https://calendly.com/cmsschoolchoice)

**Web:** [cmschoice.org](https://cmschoice.org)

  [cmsschoolchoice](https://www.facebook.com/cmsschoolchoice)